




ENYBOARD –  
KV SMALL-TYPE DISTRIBUTION BOARD  
FOR PRO'S

[hensel-electric.de](http://hensel-electric.de)

**HENSEL**



## The right box for every application KV small-type distribution boards until 63 A

- + 3 up to 54 modules
- + IP 54-65
- + Protection class II, 
- + in accordance with DIN EN 60670-24 / DIN 43871



**KV small-type distribution boards:**  
IP 54 / IP 65  
Circuit breaker box,  
elastic membranes

**18\_28**



**KV small-type distribution boards:**  
IP 54 / IP 65  
Circuit breaker box,  
metric knockouts

**29\_33**



**KV small-type distribution boards:**  
IP 65  
Circuit breaker box „weatherproof“,  
for outdoor installation,  
elastic membranes

**34\_37**



**KV small-type distribution boards:**  
IP 65  
Circuit breaker boxes with additional  
space for electrical devices not to be  
manually actuated,  
elastic membranes

**38\_40**



**KV small-type distribution boards:**  
IP 54 / IP 65  
Meter box,  
elastic membranes

**41\_42**

# MORE THAN 90 YEARS OF EXPERIENCE – YOUR ELECTRICAL ENERGY POWERS US

Electrical energy flows everywhere. It provides light, heat and movement. As a family-owned company operating worldwide, we guarantee the safe distribution of electrical energy in industry, commerce and infrastructure.

With over 1,000 employees, 640 of them in Germany, 14 subsidiaries in Germany and abroad, we have been operating successfully in the market for over 90 years. We work enthusiastically to take our products and services to the next level. Solutions for photovoltaics and e-mobility are becoming increasingly important. In this way, we are making an active contribution to the energy transition and working towards a safer electric future.

**Please scan the QR code or see our website  
[www.hensel-electric.de](http://www.hensel-electric.de)  
for more detailed information.**



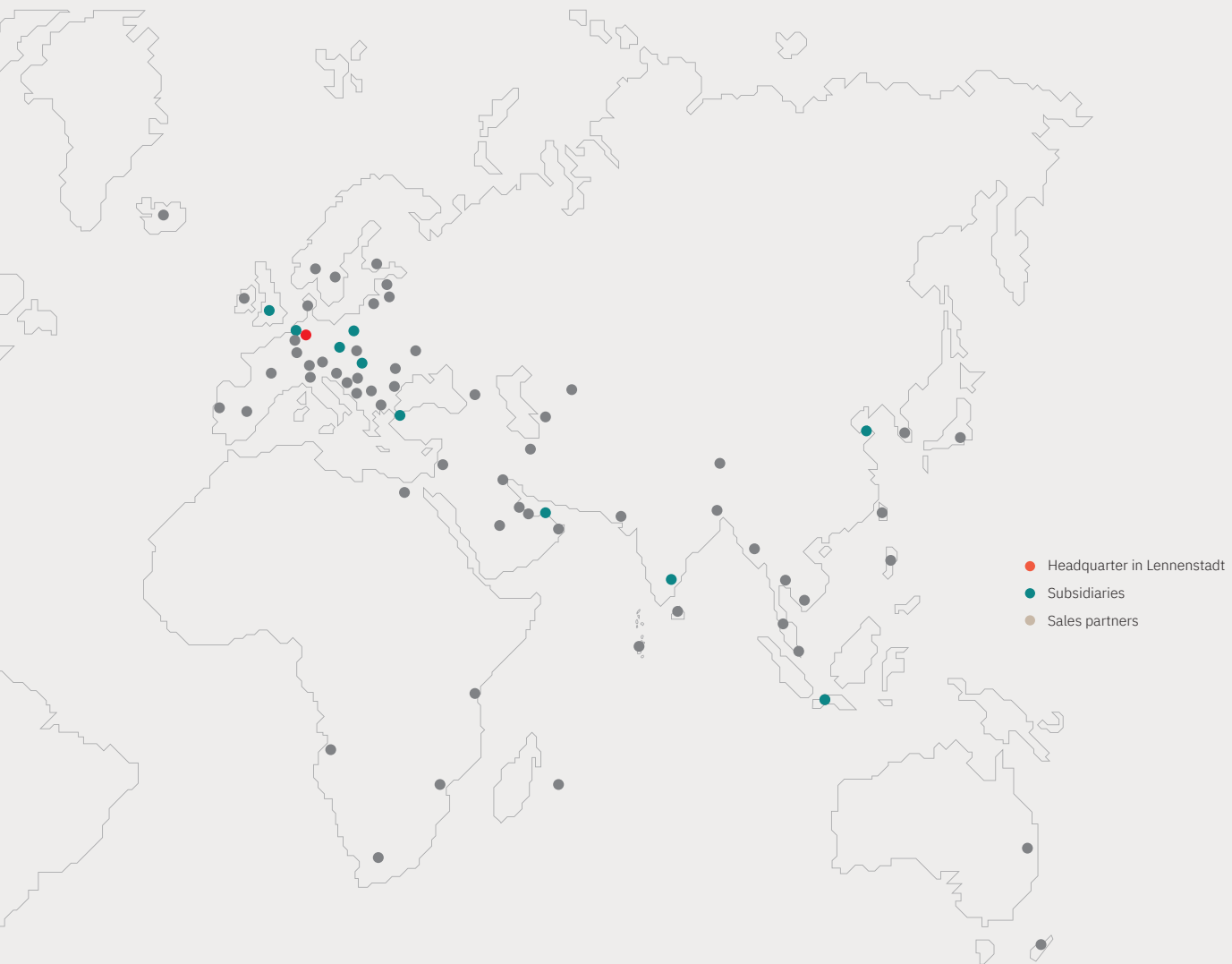
FAMILY  
COMPANY



SINCE  
1931

## International presence

HENSEL guarantees local support and a high degree of availability thanks to its 4 locations in Germany, 10 locations own by HENSEL and 60 international partners.



MORE THAN 60 INTERNATIONAL PARTNERS



ELECTRICAL INSTALLATION AND DISTRIBUTION SYSTEMS



1000 EMPLOYEES



13 SUBSIDIARIES NATIONALLY AND INTERNATIONALLY

## THE SMALL DISTRIBUTION BOARD WITH MANY PRACTICAL ADVANTAGES

KV small-type distribution boards are quite big in economical energy distribution for trade and industry. Close to the workplace. Safe due to the highest material quality. Standard-compliant thanks to HENSEL know-how.



ONE DOOR ACROSS ALL  
INSTALLATION SERIES



## The HENSEL advantages



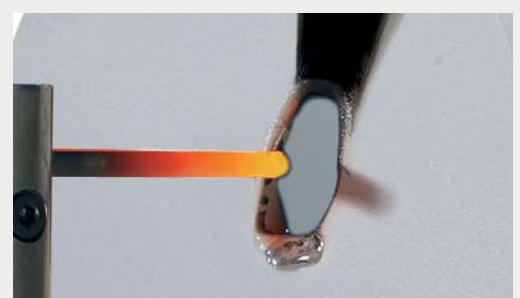
Visually clean installation due to enclosed cable entry cover.  
Modern FIXCONNECT® plug-in terminal technology

Support rails with end stop for the built-in unit



Integrated accessory compartment - everything has its place, nothing gets lost

Flame-retardant, self-extinguishing burning behaviour: Glow wire test in accordance with IEC 60695-2-11

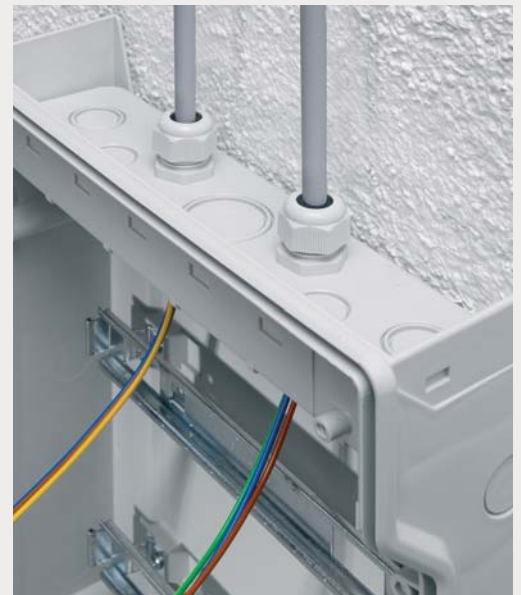


## Practical solutions for the cable entry



Cable entry with integrated, elastic membranes

Cable entry via knockouts with cable glands



## Mounting sets for pipe and pole mounting

Pole mounting for KV small-type distribution boards with up to 54 modules





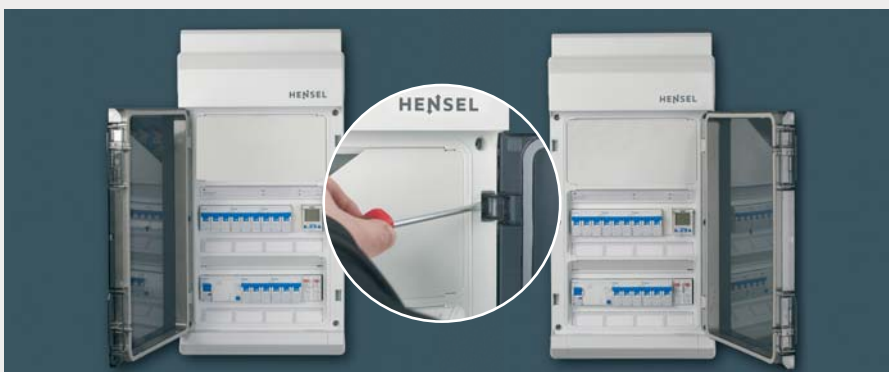
## Securely closed with built-in lock and lead sealing



Sealing of lower part and lid



Door lockable and/or sealable with built-in lock



Door hinge can be easily changed by means of latching

## Modern boxes with plenty of space for mounting



Compact user friendly solution, optically optimized by cable entry cover

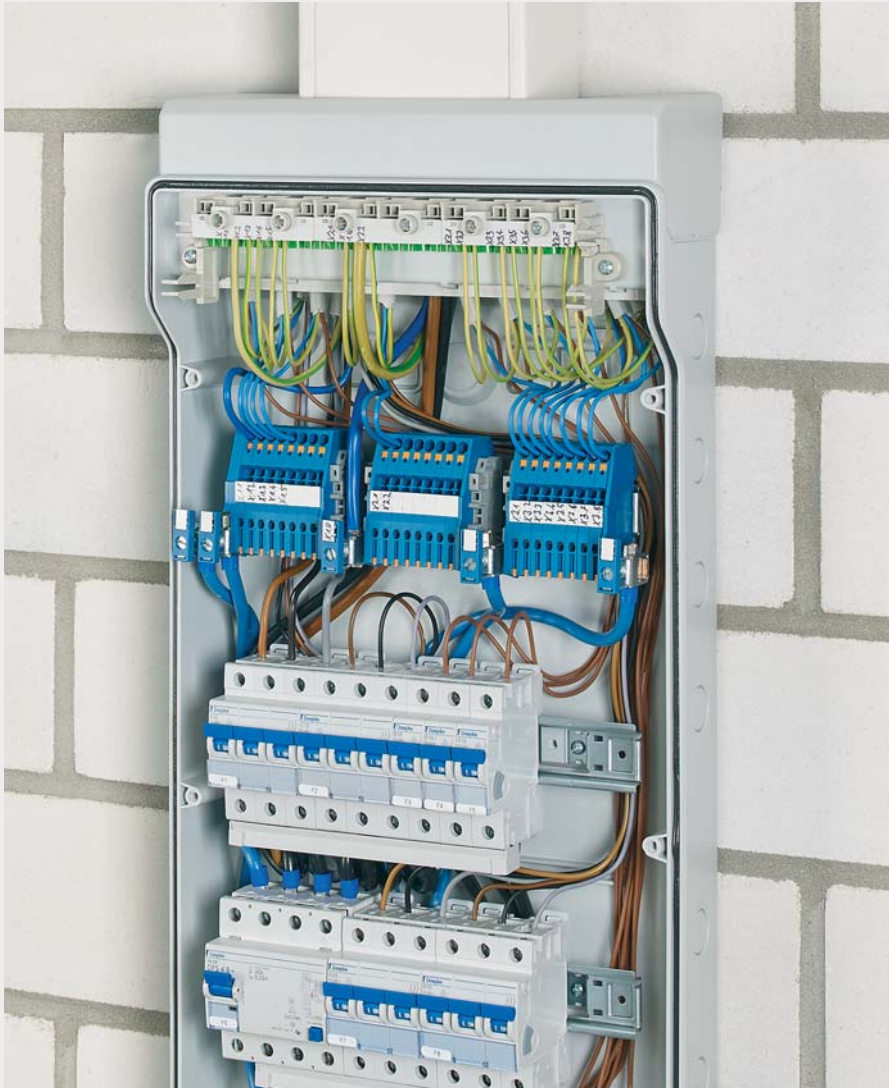


THAT'S JUST RIGHT!  
ACCESSORIES FOR  
REAL PRO'S.

Any item can be found  
easily and quickly at  
[hensel-electric.de/enyboard](https://hensel-electric.de/enyboard).



Scan the QR  
code directly  
now



Plenty of space for wiring, more convenient access for wiring

Multiple box attachments – even on pillars or narrow components



Variable installation depth by repositioning the support rails at different heights

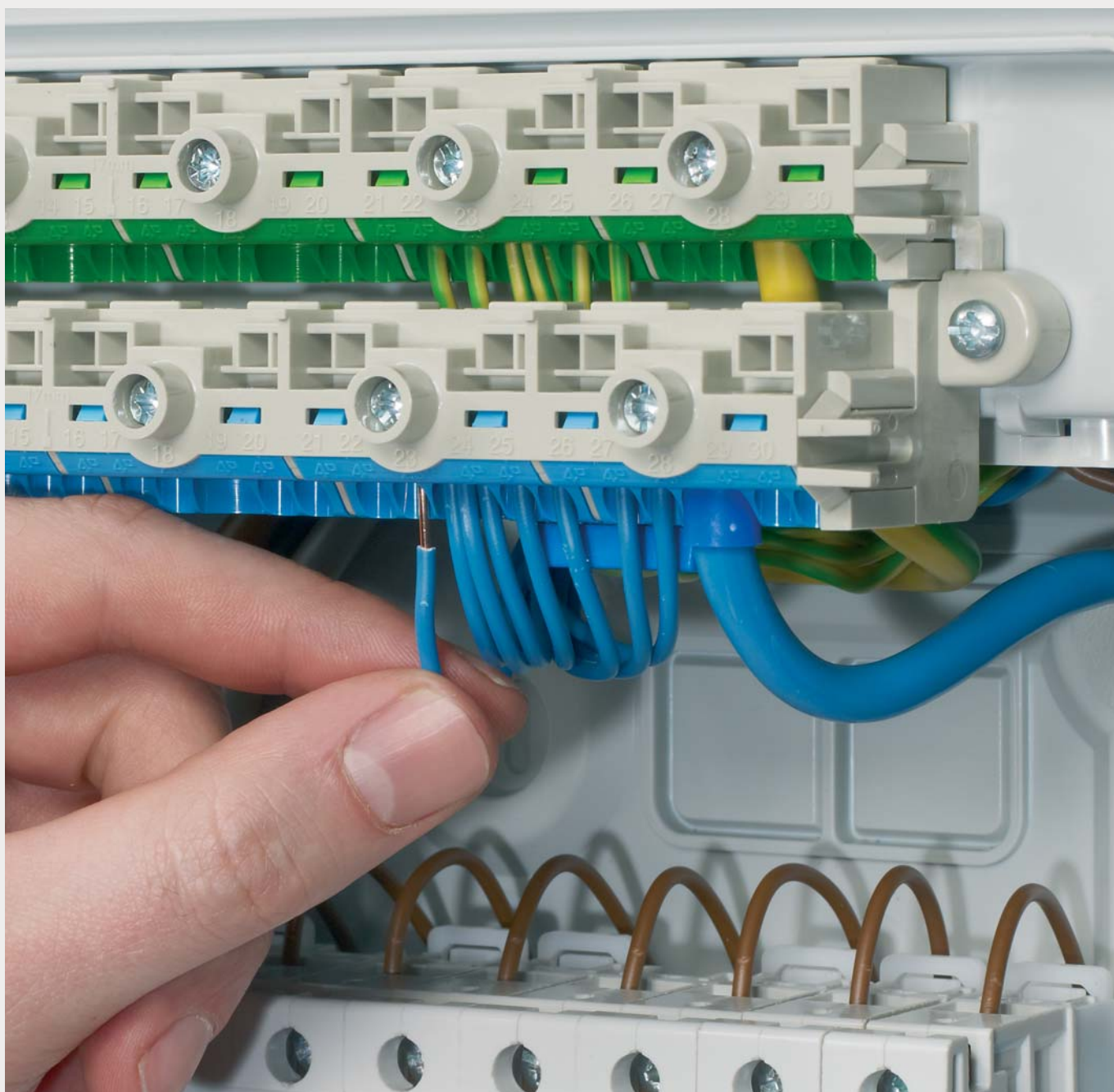


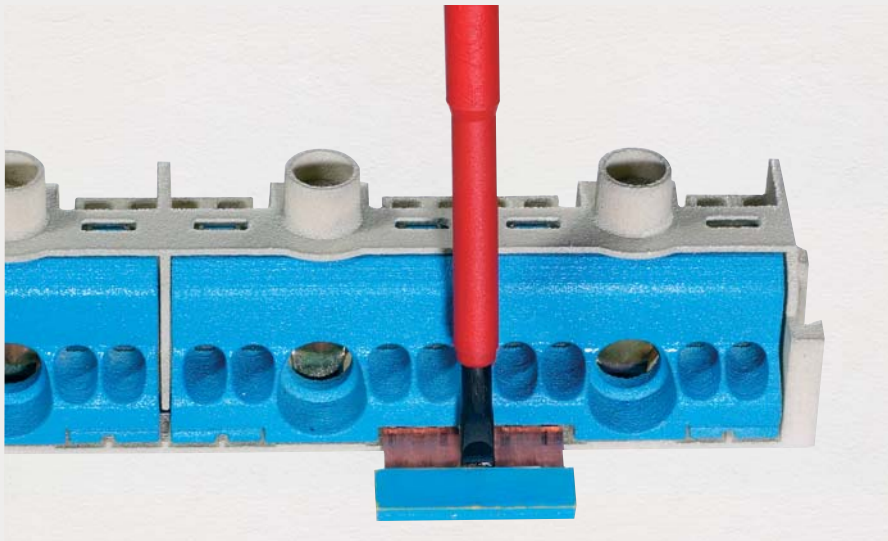
Enclosed cover strips

# FIXCONNECT® PLUG-IN TERMINAL TECHNOLOGY

**Fast assembly thanks to FIXCONNECT® plug-in terminal technology**

PE/N terminal in plug-in terminal technology

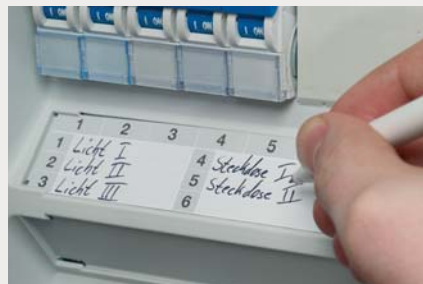




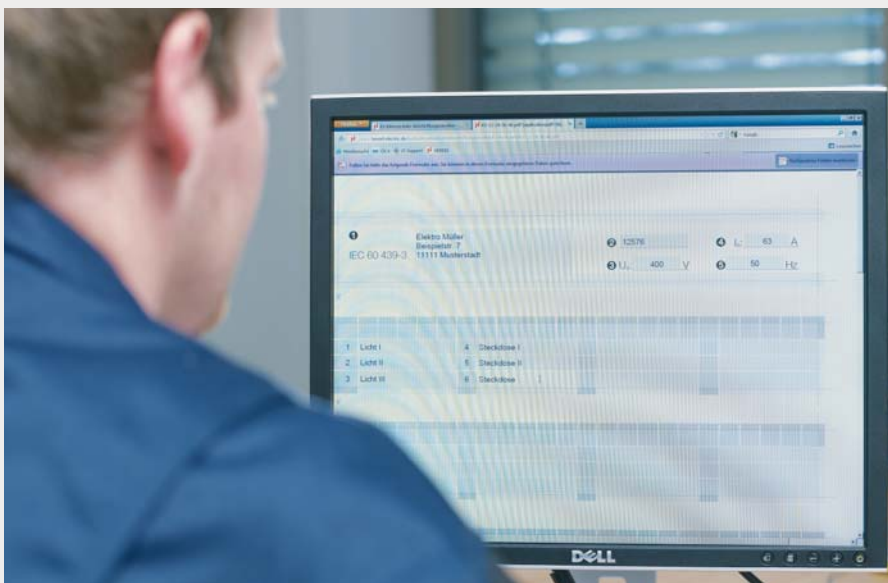
Pluggable jumpers for different N potentials



Labelling option for the terminal



Plenty of space for circuit identification

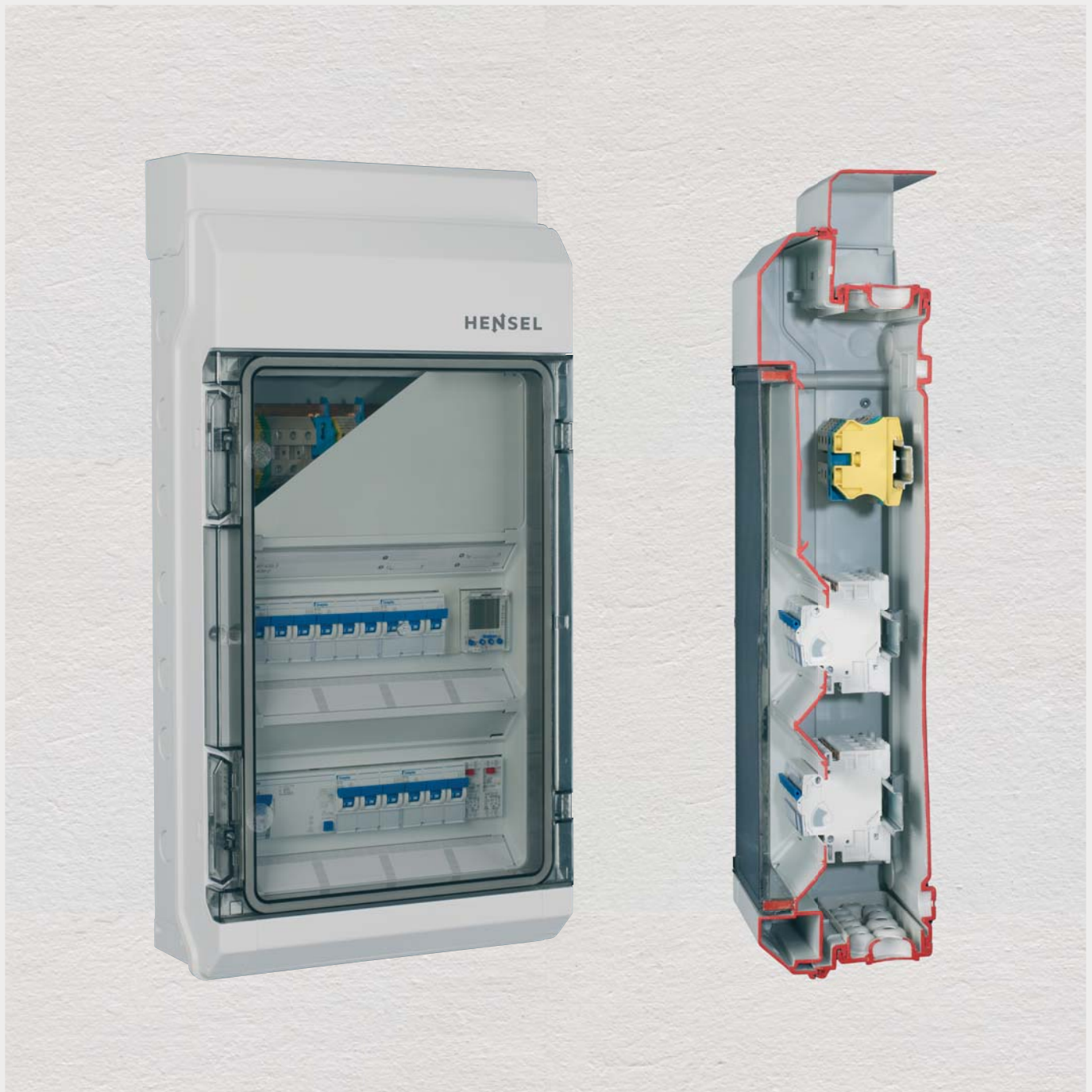


Editable template at [hensel-electric.de](http://hensel-electric.de)

## KV EXTRA

### With space for operation-independent electrical devices

Built-in installation devices in accordance with the standard (in envelope dimensions in accordance with DIN 43880) and operation-independent devices can be installed in the same enclosure at the same time.

IP  
65

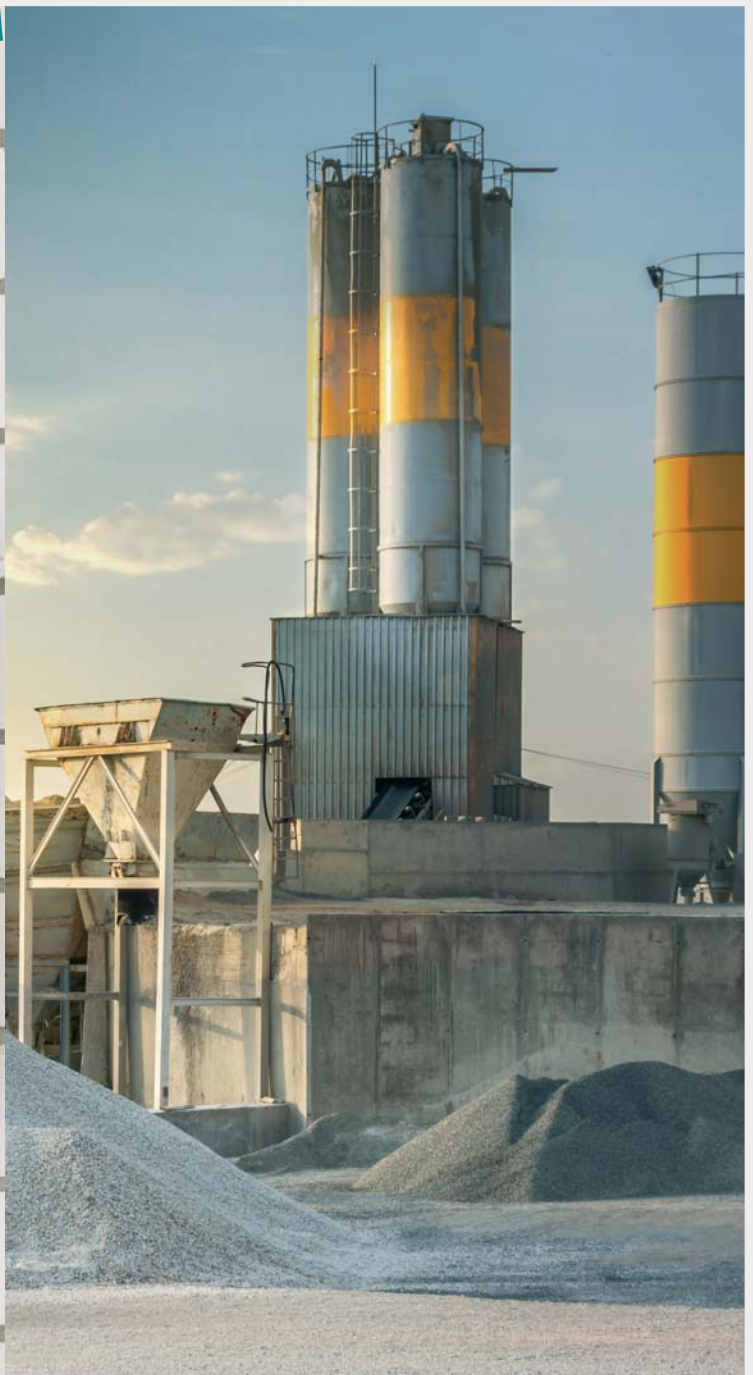
## KV PC WEATHER PROOF

### For unprotected outdoor installation

Weatherproof KV small-type distribution boards are quite big on economical power distribution for outdoor commercial and industrial installations.

WEATHERPROOF

IP  
65



# PRODUCT RANGE OVERVIEW

## KV Small-type distribution boards

- + Small-type distribution boards in accordance with DIN 43871 up to IP 65
- + For rail mounted units up to 63 A in accordance with DIN 43880
- + Operation by non-specialists possible
- + In accordance with IEC 60670-24

MODULES 1 TE = 18 mm	IP 54 FIXCONNECT® with terminal	IP 65 FIXCONNECT® with terminal	IP 65 KV without terminal	IP 54 KV without terminal
3 modules Single row with 3 modules	KV 1503	KV 9103	KV 8103	KV 1603
4,5 modules Single row with 4.5 modules	KV 1504	KV 9104	KV 8104	KV 1604
6 modules Single row with 6 modules	KV 1506	KV 9106	KV 8106	KV 1606
9 modules Single row with 9 modules	KV 1509	KV 9109	KV 8109	KV 1609
12 modules Single row with 12 modules	KV 1512	KV 9112	KV 8112 KV 8112 G	KV 1612
18 modules Single row with 18 modules	KV 1518	KV 9118	KV 8118 KV 8118 G	KV 1618
24 modules 2 rows each with 12 modules	KV 2524	KV 9224	KV 8224 KV 8224 G	KV 1624
36 modules 2 rows each with 18 modules	KV 2536	KV 9236	KV 8236	KV 1636
36 modules 3 rows each with 12 modules	KV 3536	KV 9336	KV 8336	KV 1636
48 modules 4 rows each with 12 modules	KV 4548	KV 9448	KV 8448 KV 8448 G	KV 1648
54 modules 3 rows each with 18 modules	KV 3554	KV 9354	KV 8354	KV 1654



**CIRCUIT BREAKER  
BOXES**



IP 65 KV metric without terminal	IP 65 FIXCONNECT® metric with terminal	IP 54 KV metric without terminal	IP 65 KV extra	IP 65 KV weatherproof
KV 6103				KV PC 9103
KV 6104				KV PC 9104
KV 6106				KV PC 9106
KV 6109				KV PC 9109
KV 6112 M	KV 9112 M	KV 1612 M	KV 9220	KV PC 9112
KV 6118 M	KV 9118 M	KV 1618 M	KV 9230	
KV 6124 M	KV 9224 M	KV 1624 M	KV 9330	KV PC 9224
KV 6136 M	KV 9236 M	KV 1636 M	KV 9350	
KV 6136 M	KV 9336 M	KV 1636 M	KV 9440	KV PC 9336
KV 6148 M	KV 9448 M	KV 1648 M		KV PC 9448
KV 6154 M	KV 9354 M	KV 1654 M		

# KV SMALL-TYPE DISTRIBUTION BOARDS CIRCUIT BREAKER BOX

Conduit entry via integrated elastic membranes





## System properties

- + Compact user friendly solution, optically optimized by cable entry cover
- + Integrated compartment for accessories - everything has its proper place
- + Screws made of stainless steel V2A
- + FIXCONNECT® plug-in terminal technology for PE and N
- + Connection for copper conductors
- + 12 up to 54 modules: attached blanking strips for DIN rail equipment openings
- + 3 up to 9 modules: protective cover can be cut out

- + Material: polystyrene
- + Burning behaviour:  
glow wire test in accordance with IEC 60695-2-11: 750 °C, flame-retardant, self-extinguishing
- + Colour: grey, RAL 7035



Please scan the QR code or see our website [hensel-electric.de](https://hensel-electric.de) to get detailed information.

**KV SMALL-TYPE DISTRIBUTION BOARDS** - WITH FIXCONNECT® N AND PE TERMINALS  
IP65, 3-54 TE



**KV 9103**

- + with FIXCONNECT® N- und PE terminal
- + with 1x 3 modules (18 mm)
- + dimensions H x W x D: 197 x 102 x 92 mm



**KV 9104**

- + with FIXCONNECT® N- und PE terminal
- + with 1x 4.5 modules (18 mm)
- + dimensions H x W x D: 228 x 126 x 111 mm



**KV 9106**

- + with FIXCONNECT® N- und PE terminal
- + with 1x 6 modules (18 mm)
- + dimensions H x W x D: 238 x 146 x 111 mm



**KV 9109**

- + with FIXCONNECT® N- und PE terminal
- + with 1x 9 modules (18 mm)
- + dimensions H x W x D: 238 x 200 x 111 mm



**KV 9112**

- + with FIXCONNECT® N- und PE terminal
- + with 1x 12 modules (18 mm)
- + dimensions H x W x D: 333 x 295 x 129 mm



**KV 9118**

- + with FIXCONNECT® N- und PE terminal
- + with 1x 18 modules (18 mm)
- + dimensions H x W x D: 333 x 403 x 129 mm



**KV 9224**

- + with FIXCONNECT® N- und PE terminal
- + with 2x 12 modules (18 mm)
- + dimensions H x W x D: 458 x 295 x 129 mm





**KV 9236**

- + with FIXCONNECT® N- und PE terminal
- + with 2x 18 modules (18 mm)
- + dimensions H x W x D: 483 x 403 x 129 mm



**KV 9336**

- + with FIXCONNECT® N- und PE terminal
- + with 3x 12 modules (18 mm)
- + dimensions H x W x D: 583 x 295 x 129 mm



**KV 9448**

- + with FIXCONNECT® N- und PE terminal
- + with 4x 12 modules (18 mm)
- + dimensions H x W x D: 708 x 295 x 129 mm



**KV 9354**

- + with FIXCONNECT® N- und PE terminal
- + with 3x 18 modules (18 mm)
- + dimensions H x W x D: 630 x 403 x 129 mm



**KV SMALL-TYPE DISTRIBUTION BOARDS** - WITH FIXCONNECT® N AND PE TERMINALS  
IP54, 3-54 TE

	<b>KV 1503</b>	<ul style="list-style-type: none"> <li>+ with FIXCONNECT® N- und PE terminal</li> <li>+ with 1x 3 modules (18 mm)</li> <li>+ dimensions H x W x D: 197 x 102 x 92 mm</li> </ul>	 
	<b>KV 1504</b>	<ul style="list-style-type: none"> <li>+ with FIXCONNECT® N- und PE terminal</li> <li>+ with 1x 4.5 modules (18 mm)</li> <li>+ dimensions H x W x D: 228 x 126 x 111 mm</li> </ul>	 
	<b>KV 1506</b>	<ul style="list-style-type: none"> <li>+ with FIXCONNECT® N- und PE terminal</li> <li>+ with 1x 6 modules (18 mm)</li> <li>+ dimensions H x W x D: 238 x 146 x 111 mm</li> </ul>	 
	<b>KV 1509</b>	<ul style="list-style-type: none"> <li>+ with FIXCONNECT® N- und PE terminal</li> <li>+ with 1x 9 modules (18 mm)</li> <li>+ dimensions H x W x D: 238 x 200 x 111 mm</li> </ul>	 
	<b>KV 1512</b>	<ul style="list-style-type: none"> <li>+ with FIXCONNECT® N- und PE terminal</li> <li>+ with 1x 12 modules (18 mm)</li> <li>+ dimensions H x W x D: 333 x 295 x 129 mm</li> </ul>	 
	<b>KV 1518</b>	<ul style="list-style-type: none"> <li>+ with FIXCONNECT® N- und PE terminal</li> <li>+ with 1x 18 modules (18 mm)</li> <li>+ dimensions H x W x D: 333 x 403 x 129 mm</li> </ul>	 
	<b>KV 2524</b>	<ul style="list-style-type: none"> <li>+ with FIXCONNECT® N- und PE terminal</li> <li>+ with 2x 12 modules (18 mm)</li> <li>+ dimensions H x W x D: 458 x 295 x 129 mm</li> </ul>	 



**KV 2536**

- + with FIXCONNECT® N- und PE terminal
- + with 2x 18 modules (18 mm)
- + dimensions H x W x D: 483 x 403 x 129 mm



**KV 3536**

- + with FIXCONNECT® N- und PE terminal
- + with 3x 12 modules (18 mm)
- + dimensions H x W x D: 583 x 295 x 129 mm



**KV 4548**

- + with FIXCONNECT® N- und PE terminal
- + with 4x 12 modules (18 mm)
- + dimensions H x W x D: 708 x 295 x 129 mm



**KV 3554**

- + with FIXCONNECT® N- und PE terminal
- + with 3x 18 modules (18 mm)
- + dimensions H x W x D: 630 x 403 x 129 mm



## KV SMALL-TYPE DISTRIBUTION BOARDS - WITHOUT TERMINALS

IP 65, 3-54 TE

	<b>KV 8103</b>	<ul style="list-style-type: none"><li>+ without terminals</li><li>+ with 1x 3 modules (18 mm)</li><li>+ dimensions H x W x D: 197 x 102 x 92 mm</li></ul>	 
	<b>KV 8104</b>	<ul style="list-style-type: none"><li>+ without terminals</li><li>+ with 1x 4.5 modules (18 mm)</li><li>+ dimensions H x W x D: 228 x 126 x 111 mm</li></ul>	 
	<b>KV 8106</b>	<ul style="list-style-type: none"><li>+ without terminals</li><li>+ with 1x 6 modules (18 mm)</li><li>+ dimensions H x W x D: 238 x 146 x 111 mm</li></ul>	 
	<b>KV 8109</b>	<ul style="list-style-type: none"><li>+ without terminals</li><li>+ with 1x 9 modules (18 mm)</li><li>+ dimensions H x W x D: 238 x 200 x 111 mm</li></ul>	 
	<b>KV 8112</b>	<ul style="list-style-type: none"><li>+ without terminals</li><li>+ with 1x 12 modules (18 mm)</li><li>+ dimensions H x W x D: 333 x 295 x 129 mm</li></ul>	 
	<b>KV 8118</b>	<ul style="list-style-type: none"><li>+ without terminals</li><li>+ with 1x 18 modules (18 mm)</li><li>+ dimensions H x W x D: 333 x 403 x 129 mm</li></ul>	 
	<b>KV 8224</b>	<ul style="list-style-type: none"><li>+ without terminals</li><li>+ with 2x 12 modules (18 mm)</li><li>+ dimensions H x W x D: 458 x 295 x 129 mm</li></ul>	 





**KV 8236**

- + without terminals
- + with 2x 18 modules (18 mm)
- + dimensions H x W x D: 483 x 403 x 129 mm



**KV 8336**

- + without terminals
- + with 3x 12 modules (18 mm)
- + dimensions H x W x D: 583 x 295 x 129 mm



**KV 8448**

- + without terminals
- + with 4x 12 modules (18 mm)
- + dimensions H x W x D: 708 x 295 x 129 mm



**KV 8354**

- + without terminals
- + with 3x 18 modules (18 mm)
- + dimensions H x W x D: 630 x 403 x 129 mm



## KV SMALL-TYPE DISTRIBUTION BOARDS - WITHOUT TERMINALS

IP 65, 3-54 TE



- KV 8112 G**
- + without terminals
  - + with 1x 12 modules (18 mm)
  - + dimensions H x W x D: 333 x 295 x 129 mm



- KV 8118 G**
- + without terminals
  - + with 1x 18 modules (18 mm)
  - + dimensions H x W x D: 333 x 403 x 129 mm



- KV 8224 G**
- + without terminals
  - + with 2x 12 modules (18 mm)
  - + box walls without knockouts
  - + dimensions H x W x D: 458 x 295 x 129 mm



- KV 8448 G**
- + without terminals
  - + with 4x 12 modules (18 mm)
  - + box walls without knockouts
  - + dimensions H x W x D: 708 x 295 x 129 mm





**KV 1603**

- + without terminals
- + with 1x 3 modules (18 mm)
- + dimensions H x W x D: 197 x 102 x 92 mm



**KV 1604**

- + without terminals
- + with 1x 4.5 modules (18 mm)
- + dimensions H x W x D: 228 x 126 x 111 mm



**KV 1606**

- + without terminals
- + with 1x 6 modules (18 mm)
- + dimensions H x W x D: 238 x 146 x 111 mm



**KV 1609**

- + without terminals
- + with 1x 9 modules (18 mm)
- + dimensions H x W x D: 238 x 200 x 111 mm



**KV 1612**

- + without terminals
- + with 1x 12 modules (18 mm)
- + dimensions H x W x D: 333 x 295 x 129 mm



**KV 1618**

- + without terminals
- + with 1x 18 modules (18 mm)
- + dimensions H x W x D: 333 x 403 x 129 mm



**KV 2624**

- + without terminals
- + with 2x 12 modules (18 mm)
- + dimensions H x W x D: 458 x 295 x 129 mm



## KV SMALL-TYPE DISTRIBUTION BOARDS - WITHOUT TERMINALS

IP 54, 3-54 TE



**KV 2636**

- + without terminals
- + with 2x 18 modules (18 mm)
- + dimensions H x W x D: 483 x 403 x 129 mm



**KV 3636**

- + without terminals
- + with 3x 12 modules (18 mm)
- + dimensions H x W x D: 583 x 295 x 129 mm



**KV 4648**

- + without terminals
- + with 4x 12 modules (18 mm)
- + dimensions H x W x D: 708 x 295 x 129 mm



**KV 3654**

- + without terminals
- + with 3x 18 modules (18 mm)
- + dimensions H x W x D: 630 x 403 x 129 mm



# KV SMALL-TYPE DISTRIBUTION BOARDS

## CIRCUIT BREAKER BOX

cable entry via metric knockouts



### System properties

- + Compact user friendly solution, optically optimized by cable entry cover
- + Integrated compartment for accessories - everything has its proper place
- + Screws made of stainless steel V2A
- + FIXCONNECT® plug-in terminal technology for PE and N
- + Connection for copper conductors
- + 12 up to 54 modules: attached blanking strips for DIN rail equipment openings

- + Material: polystyrene
- + Burning behaviour: glow wire test in accordance with IEC 60695-2-11: 750 °C, flame-retardant, self-extinguishing
- + Colour: grey, RAL 7035



Please scan the QR code or see our website [hensel-electric.de](https://hensel-electric.de) to get detailed information.

**KV SMALL-TYPE DISTRIBUTION BOARDS - WITHOUT TERMINALS**

IP 65, 3-54 TE

	<b>KV 6103</b>	<ul style="list-style-type: none"> <li>+ without terminals</li> <li>+ with 1x 3 modules (18 mm)</li> <li>+ with metric knockouts</li> <li>+ dimensions H x W x D: 197 x 102 x 92 mm</li> </ul>	 
	<b>KV 6104</b>	<ul style="list-style-type: none"> <li>+ without terminals</li> <li>+ with 1x 4.5 modules (18 mm)</li> <li>+ with metric knockouts</li> <li>+ dimensions H x W x D: 228 x 126 x 111 mm</li> </ul>	 
	<b>KV 6106</b>	<ul style="list-style-type: none"> <li>+ without terminals</li> <li>+ with 1x 6 modules (18 mm)</li> <li>+ with metric knockouts</li> <li>+ dimensions H x W x D: 238 x 146 x 111 mm</li> </ul>	 
	<b>KV 6109</b>	<ul style="list-style-type: none"> <li>+ without terminals</li> <li>+ with 1x 9 modules (18 mm)</li> <li>+ with metric knockouts</li> <li>+ dimensions H x W x D: 238 x 200 x 111 mm</li> </ul>	 
	<b>KV 8112 M</b>	<ul style="list-style-type: none"> <li>+ without terminals</li> <li>+ with 1x 12 modules (18 mm)</li> <li>+ with metric knockouts</li> <li>+ dimensions H x W x D: 333 x 295 x 129 mm</li> </ul>	 
	<b>KV 8118 M</b>	<ul style="list-style-type: none"> <li>+ without terminals</li> <li>+ with 1x 18 modules (18 mm)</li> <li>+ with metric knockouts</li> <li>+ dimensions H x W x D: 333 x 403 x 129 mm</li> </ul>	 
	<b>KV 8224 M</b>	<ul style="list-style-type: none"> <li>+ without terminals</li> <li>+ with 2x 12 modules (18 mm)</li> <li>+ with metric knockouts</li> <li>+ dimensions H x W x D: 458 x 295 x 129 mm</li> </ul>	 



- KV 8236 M**
- + without terminals
  - + with 2x 18 modules (18 mm)
  - + with metric knockouts
  - + dimensions H x W x D: 483 x 403 x 129 mm



- KV 8336 M**
- + without terminals
  - + with 3x 12 modules (18 mm)
  - + with metric knockouts
  - + dimensions H x W x D: 583 x 295 x 129 mm



- KV 8448 M**
- + without terminals
  - + with 4x 12 modules (18 mm)
  - + with metric knockouts
  - + dimensions H x W x D: 708 x 295 x 129 mm



- KV 8354 M**
- + without terminals
  - + with 3x 18 modules (18 mm)
  - + with metric knockouts
  - + dimensions H x W x D: 630 x 403 x 129 mm



	<b>KV 9112 M</b>	<ul style="list-style-type: none"> <li>+ with FIXCONNECT® N- und PE terminal</li> <li>+ with 1x 12 modules (18 mm)</li> <li>+ with metric knockouts</li> <li>+ dimensions H x W x D: 333 x 295 x 129 mm</li> </ul>	 
	<b>KV 9118 M</b>	<ul style="list-style-type: none"> <li>+ with FIXCONNECT® N- und PE terminal</li> <li>+ with 1x 18 modules (18 mm)</li> <li>+ with metric knockouts</li> <li>+ dimensions H x W x D: 333 x 403 x 129 mm</li> </ul>	 
	<b>KV 9224 M</b>	<ul style="list-style-type: none"> <li>+ with FIXCONNECT® N- und PE terminal</li> <li>+ with 2x 12 modules (18 mm)</li> <li>+ with metric knockouts</li> <li>+ dimensions H x W x D: 458 x 295 x 129 mm</li> </ul>	 
	<b>KV 9236 M</b>	<ul style="list-style-type: none"> <li>+ with FIXCONNECT® N- und PE terminal</li> <li>+ with 2x 18 modules (18 mm)</li> <li>+ with metric knockouts</li> <li>+ dimensions H x W x D: 483 x 403 x 129 mm</li> </ul>	 
	<b>KV 9336 M</b>	<ul style="list-style-type: none"> <li>+ with FIXCONNECT® N- und PE terminal</li> <li>+ with 3x 12 modules (18 mm)</li> <li>+ with metric knockouts</li> <li>+ dimensions H x W x D: 583 x 295 x 129 mm</li> </ul>	 
	<b>KV 9448 M</b>	<ul style="list-style-type: none"> <li>+ with FIXCONNECT® N- und PE terminal</li> <li>+ with 4x 12 modules (18 mm)</li> <li>+ with metric knockouts</li> <li>+ dimensions H x W x D: 708 x 295 x 129 mm</li> </ul>	 
	<b>KV 9354 M</b>	<ul style="list-style-type: none"> <li>+ with FIXCONNECT® N- und PE terminal</li> <li>+ with 3x 18 modules (18 mm)</li> <li>+ with metric knockouts</li> <li>+ dimensions H x W x D: 630 x 403 x 129 mm</li> </ul>	 





- KV 1612 M**
- + without terminals
  - + with 1x 12 modules (18 mm)
  - + with metric knockouts
  - + dimensions H x W x D: 333 x 295 x 129 mm



- KV 1618 M**
- + without terminals
  - + with 1x 18 modules (18 mm)
  - + with metric knockouts
  - + dimensions H x W x D: 333 x 403 x 129 mm



- KV 2624 M**
- + without terminals
  - + with 2x 12 modules (18 mm)
  - + with metric knockouts
  - + dimensions H x W x D: 458 x 295 x 129 mm



- KV 2636 M**
- + without terminals
  - + with 2x 18 modules (18 mm)
  - + with metric knockouts
  - + dimensions H x W x D: 483 x 403 x 129 mm



- KV 3636 M**
- + without terminals
  - + with 3x 12 modules (18 mm)
  - + with metric knockouts
  - + dimensions H x W x D: 583 x 295 x 129 mm



- KV 4648 M**
- + without terminals
  - + with 4x 12 modules (18 mm)
  - + with metric knockouts
  - + dimensions H x W x D: 708 x 295 x 129 mm



- KV 3654 M**
- + without terminals
  - + with 3x 18 modules (18 mm)
  - + with metric knockouts
  - + dimensions H x W x D: 630 x 403 x 129 mm



# KV SMALL-TYPE DISTRIBUTION BOARDS

## CIRCUIT BREAKER BOX

### „WEATHERPROOF“

#### FOR OUTDOOR INSTALLATION

Cable entry via elastic membranes or metric knockouts



„WEATHERPROOF“





## System properties

- + Weatherproof: UV-resistant, rainproof, temperature-resistant, impact-resistant, halogen-free and silicone-free
- + Compact user friendly solution, optically optimized by cable entry cover
- + Integrated compartment for accessories - everything has its proper place
- + Screws made of stainless steel V2A
- + Conduit entry via integrated elastic membranes
- + Cable entry via metric knockouts
- + FIXCONNECT® plug-in terminal technology for PE and N
- + Connection for copper conductors
- + 12 up to 54 modules: attached blanking strips for DIN rail equipment openings
- + 3 up to 9 modules: protective cover can be cut out
- + Material: polystyrene
- + Burning behaviour: glow wire test in accordance with IEC 60695-2-11: 960 °C, flame-retardant, self-extinguishing
- + Colour: grey, RAL 7035



Please scan the QR code or see our website [hensel-electric.de](https://hensel-electric.de) to get detailed information.

**KV PC-SMALL-TYPE DISTRIBUTION BOARDS** - "WEATHERPROOF", FOR OUTDOOR INSTALLATION  
(HARSH ENVIRONMENT AND/OR OUTDOOR)



- KV PC 9103**
- + with FIXCONNECT® N- und PE terminal
  - + with 1x 3 modules (18 mm)
  - + with metric knockouts
  - + dimensions H x W x D: 197 x 102 x 92 mm



- KV PC 9104**
- + with FIXCONNECT® N- und PE terminal
  - + with 1x 4.5 modules (18 mm)
  - + with metric knockouts
  - + dimensions H x W x D: 228 x 126 x 111 mm



- KV PC 9106**
- + with FIXCONNECT® N- und PE terminal
  - + with 1x 6 modules (18 mm)
  - + with metric knockouts
  - + dimensions H x W x D: 238 x 146 x 111 mm



- KV PC 9109**
- + with FIXCONNECT® N- und PE terminal
  - + with 1x 9 modules (18 mm)
  - + with metric knockouts
  - + dimensions H x W x D: 238 x 200 x 111 mm



- KV PC 9112**
- + with FIXCONNECT® N- und PE terminal
  - + with 1x 12 modules (18 mm)
  - + dimensions H x W x D: 333 x 295 x 129 mm



- KV PC 9224**
- + with FIXCONNECT® N- und PE terminal
  - + with 2x 12 modules (18 mm)
  - + dimensions H x W x D: 458 x 295 x 129 mm





- KV PC 9336** + with FIXCONNECT® N- und PE terminal  
 + with 3x 12 modules (18 mm)  
 + dimensions H x W x D: 583 x 295 x 129 mm



- KV PC 9448** + with FIXCONNECT® N- und PE terminal  
 + with 4x 12 modules (18 mm)  
 + dimensions H x W x D: 708 x 295 x 129 mm



## KV SMALL-TYPE DISTRIBUTION BOARDS

CIRCUIT BREAKER BOXES WITH ADDITIONAL SPACE FOR ELECTRICAL DEVICES NOT TO BE MANUALLY ACTUATED

**Cable entry via elastic membranes**



KV-EXTRA





## System properties

- + Pre-assembly and wiring in the workshop is possible in case of built-in terminal blocks
- + Within the same enclosure standard-conforming installation devices (sizes according to DIN 43880) and non-operator-controlled devices can be installed
- + Compact user friendly solution, optically optimized by cable entry cover
- + Integrated compartment for accessories - everything has its proper place
- + Screws made of stainless steel V2A
- + Cable entry via integrated elastic membranes
- + 12 up to 36 modules: blanking strips for unused DIN rail openings included Geräteausschnitt beigefüg
- + DIN-rails with stopper for proper position of installation device
- + Burning behaviour: glow wire test in accordance with IEC 60695-2-11: 750 °C, flame-retardant, self-extinguishing
- + Colour: grey, RAL 7035



Please scan the QR code or see our website [hensel-electric.de](https://hensel-electric.de) to get detailed information.

KV "EXTRA"-SMALL-TYPE DISTRIBUTION BOARDS - WITH ADDITIONAL SPACE  
FOR ELECTRICAL DEVICES NOT TO BE MANUALLY ACTUATED



**KV 9220**

- + without terminals
- + with 1x 12 modules (18 mm)
- + dimensions H x W x D: 458 x 295 x 129 mm



**KV 9230**

- + without terminals
- + with 1x 18 modules (18 mm)
- + dimensions H x W x D: 483 x 403 x 129 mm



**KV 9330**

- + without terminals
- + with 2x 12 modules (18 mm)
- + dimensions H x W x D: 583 x 295 x 129 mm



**KV 9440**

- + without terminals
- + with 3x 12 modules (18 mm)
- + dimensions H x W x D: 708 x 295 x 129 mm



**KV 9350**

- + without terminals
- + with 2x 18 modules (18 mm)
- + dimensions H x W x D: 630 x 403 x 129 mm





# KV SMALL-TYPE DISTRIBUTION BOARDS METER BOX

Cable entry via integrated elastic membranes



## System properties

- + DIN-rails with stopper for proper position of installation device
- + Sealable
- + DIN-rails with stopper for proper position of installation device
- + Screws made of stainless steel V2A
- + Burning behaviour: glow wire test in accordance with IEC 60695-2-11: 750 °C, flame-retardant, self-extinguishing
- + Colour: grey, RAL 7035



Please scan the QR code or see our website [hensel-electric.de](http://hensel-electric.de) to get detailed information.



**KV 9331**

- + without terminals
- + dimensions H x W x D: 583 x 295 x 182 mm



**KV 9337**

- + without terminals
- + with KWH meter support and meter fastening screws for meters with three-point fastening
- + with hinged flap, protection cover and DIN rail for 12 modules
- + dimensions H x W x D: 583 x 295 x 182 mm



**KV 9338**

- + without terminals
- + with KWH meter support and meter fastening screws for meters with three-point fastening
- + dimensions H x W x D: 583 x 295 x 182 mm








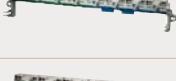
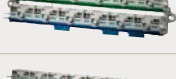







**KV 9339**

- + without terminals
- + with KWH meter support and meter fastening screws for meters with three-point fastening
- + dimensions H x W x D: 583 x 295 x 182 mm



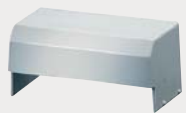
# KV SMALL-TYPE DISTRIBUTION BOARDS ACCESSORIES



	<b>KV FC 03</b>	<ul style="list-style-type: none"> <li>+ PE terminal, N terminal</li> <li>+ per PE/N 1x 25 mm<sup>2</sup> screw-type terminals and 4x 4 mm<sup>2</sup> plug-in terminals</li> </ul>	
	<b>KV FC 04</b>	<ul style="list-style-type: none"> <li>+ PE terminal, N terminal</li> <li>+ per PE/N 2x 25 mm<sup>2</sup> screw-type terminals and 4x 4 mm<sup>2</sup> plug-in terminals</li> </ul>	
	<b>KV FC 06</b>	<ul style="list-style-type: none"> <li>+ PE terminal, N terminal</li> <li>+ per PE/N 2x 25 mm<sup>2</sup> screw-type terminals and 4x 4 mm<sup>2</sup> plug-in terminals</li> </ul>	
	<b>KV FC 09</b>	<ul style="list-style-type: none"> <li>+ PE terminal, N terminal</li> <li>+ per PE/N 2x 25 mm<sup>2</sup> screw-type terminals and 8x 4 mm<sup>2</sup> plug-in terminals</li> </ul>	
	<b>KV FC 12</b>	<ul style="list-style-type: none"> <li>+ PE terminal, N terminal</li> <li>+ per PE/N 3x 25 mm<sup>2</sup> screw-type terminals and 12x 4 mm<sup>2</sup> plug-in terminals</li> </ul>	
	<b>KV FC 18</b>	<ul style="list-style-type: none"> <li>+ PE terminal, N terminal</li> <li>+ per PE/N 4x 25 mm<sup>2</sup> screw-type terminals and 16x 4 mm<sup>2</sup> plug-in terminals</li> </ul>	
	<b>KV FC 24</b>	<ul style="list-style-type: none"> <li>+ PE terminal, N terminal</li> <li>+ per PE/N 6x 25 mm<sup>2</sup> screw-type terminals and 24x 4 mm<sup>2</sup> plug-in terminals</li> </ul>	
	<b>KV FC 36</b>	<ul style="list-style-type: none"> <li>+ PE terminal, N terminal</li> <li>+ per PE/N 8x 25 mm<sup>2</sup> screw-type terminals and 32x 4 mm<sup>2</sup> plug-in terminals</li> </ul>	
	<b>FC BS 5</b>	<ul style="list-style-type: none"> <li>+ FIXCONNECT®-Labelling system for circuit description</li> <li>+ Set with 5 pieces</li> </ul>	
	<b>FC BS 6</b>	<ul style="list-style-type: none"> <li>+ FIXCONNECT®-Labelling system for circuit description</li> </ul>	
	<b>EVS 16</b>	<ul style="list-style-type: none"> <li>+ connector</li> <li>+ for lateral connection of KV enclosures</li> <li>+ Pg 16</li> </ul>	IP 54
	<b>AVS 16</b>	<ul style="list-style-type: none"> <li>+ connector</li> <li>+ for lateral connection of KV enclosures</li> <li>+ Pg 16</li> </ul>	IP 65
	<b>KHR 01</b>	<ul style="list-style-type: none"> <li>+ cable retention system</li> <li>+ set with 10 x 6 retaining rings</li> <li>+ for cable diameter 6.5 - 14 mm</li> </ul>	
	<b>KHR 02</b>	<ul style="list-style-type: none"> <li>+ cable retention system</li> <li>+ set with 10 x 6 retaining rings</li> <li>+ for cable diameter 10 - 16 mm</li> </ul>	



KV EB 03 + cable entry cover



KV EB 04 + cable entry cover



KV EB 06 + cable entry cover



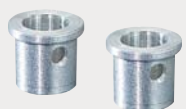
KV EB 09 + cable entry cover



KV EB 12 + cable entry cover



KV EB 18 + cable entry cover



KV PL 2 + sealing device  
 + set with 2 pieces  
 + without sealing wire and without seal  
 + for sealing between the enclosure base and upper part (doors can be sealed without accessories)



KV PL 3 + sealing device  
 + set with 2 pieces  
 + without sealing wire and without seal  
 + for sealing between the enclosure base and upper part (doors can be sealed without accessories)

KV SMALL-TYPE DISTRIBUTION BOARDS - ACCESSORIES

	<b>KV MB 3</b>	+ pipe and pole mounting set + for KV with 3 modules
	<b>KV MB 4</b>	+ pipe and pole mounting set + for KV with 4.5 modules
	<b>KV MB 6</b>	+ pipe and pole mounting set + for KV with 6 modules
	<b>KV MB 9</b>	+ pipe and pole mounting set + for KV with 9 modules
	<b>KV MB 12</b>	+ pipe and pole mounting set + for KV with 12 modules
	<b>KV MB 18</b>	+ pipe and pole mounting set + for KV with 18 modules
	<b>AS 12</b>	+ blanking strip + modules: 12
	<b>AS 18</b>	+ blanking strip + modules: 18
	<b>KV ES 1</b>	+ locking device + key lock with 2 keys
	<b>KV ES 2</b>	+ spare key + set with 2 pieces
	<b>KV ES 3</b>	+ locking device + key lock with 2 keys



## POLE MOUNTING MADE EASY

**Professional assembly solutions for  
box installation on round poles**

**MORE ACCESSORIES**



[hensel-electric.de](https://www.hensel-electric.de)

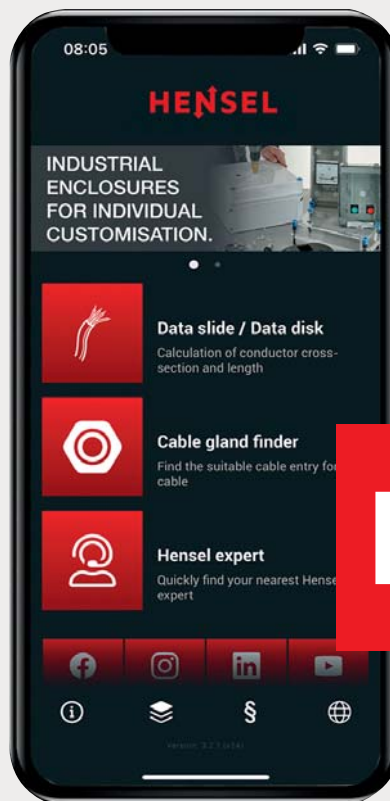
### **Pole mounting solutions for simple, secure and flexible installation**

- + For mounting installation boxes on round poles via profile clamps
- + Profile clamps and fixing screws included
- + Clamping range 60 to 150 mm
- + Easy assembly: Mounting holes with pre-cut M4 threads
- + Weatherproof thanks to stainless steel V2A
- + Available for cable junction boxes, KV small-type distribution boards and Mi distributors

# ENYEXPERT – MORE KNOWLEDGE IN YOUR HAND

Always be up-to-date on the go. In addition to useful information, the HENSEL app offers simple and practical tools to make your everyday work easier.

- + **Data slide / Data disc**  
Calculation of conductor cross section and length
- + **Cable gland finder**  
Find the suitable cable entry for your cable
- + **HENSEL expert**  
Quickly find your nearest HENSEL expert



AVAILABLE FOR ANDROID AND  
IOS (FREE OF CHARGE)



**ANDROID**  
Scan QR-Code

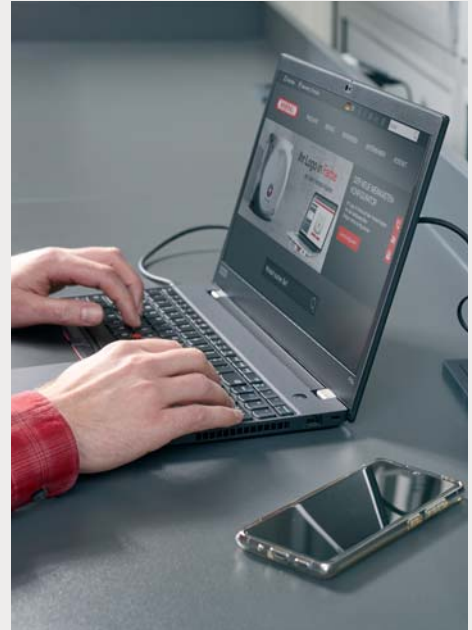


**IOS**  
Scan QR-Code



# SERVICE@HENSEL – DIGITAL, ANALOGUE AND ON SITE

In addition to the ENYEXPERT app, HENSEL offers other useful and innovative tools that significantly facilitate the everyday work in the electrical trade:



**+ MY HENSEL-BOX**

**Your Logo on the HENSEL-box**

Use the HENSEL-box as a business card for your installation services



Please contact your HENSEL expert:  
**hensel-electric.de**

**+ ENYGUIDE**

**The 3D Configurator for Mi- and ENYSTAR distribution boards**

Whether as a 2D drawing or as a three-dimensional image – The intuitive 3D planning tool ENYGUIDE supports electrical specialists in the planning, project planning and ordering of HENSEL ENYSTAR and Mi Distribution boards.



More:  
**enyguide.de**

**+ CALCULATION TOOL**

**for the verification of the permissible temperature rise**

The online tool for quickly and easily determining the power loss.



**+ PORTAL 61439**

The platform with all information about design and assembly according to IEC 61439 / EN 61439.





FOR A SAFE  
ELECTRIC FUTURE.

**HENSEL**



MADE IN GERMANY

**Gustav Hensel GmbH & Co. KG**

Gustav-Hensel-Str. 6

57368 Lennestadt

+49 2723 609-0

info@hensel-electric.de

hensel-electric.de

98171695 01/24

**HEÑSEL**